

SUPER FAST-CLEAN



PISTON GUNSTOCK FILTERS

- Code 11039: Green (30M)
- Code 11038: White (60M)
- Code 11037: Yellow (100M)
- Code 11019: Red (200M)



*Code-nozzle angle	Ø Inch	Ø mm	Product type	Filter recom.
SFC07-20	0,007"	0,18	Transp. and pigmented paints, thin enamels	Red 200 M
SFC07-40				
SFC09-20	0,009"	0,23		
SFC09-40				
SFC11-20	0,011"	0,28	Nitro, synthetic and polyurethane paints	Yellow 100 M
SFC11-40				
SFC13-20	0,013"	0,33		
SFC13-40				
SFC13-60				
SFC15-20	0,015"	0,38	Antirust	
SFC15-40				
SFC15-60				
SFC17-20	0,017"	0,43		
SFC17-40				
SFC17-60				
SFC19-20	0,019"	0,48	Primers, zinc inorganic, water paints	White 60 M
SFC19-40				
SFC19-60				
SFC21-20	0,021"	0,53		
SFC21-40				
SFC21-60				
SFC23-20	0,023"	0,58		
SFC23-40				
SFC23-60				
SFC25-20	0,025"	0,63	Thixotropic, stucco spray, high solid, paints with glue, fillers	
SFC25-40				
SFC25-60				
SFC27-20	0,027"	0,68		
SFC27-40				
SFC27-60				
SFC27-80				
SFC29-20	0,029"	0,74		
SFC29-40				
SFC29-60				
SFC29-80				
SFC31-40	0,031"	0,79		
SFC31-60				
SFC31-80				
SFC33-40	0,033"	0,83		
SFC33-60				
SFC33-80				
SFC35-40	0,035"	0,89		
SFC37-40	0,037"	0,94		
SFC39-40	0,039"	1,00		
SFC39-60				
SFC39-80				
SFC41-40	0,041"	1,05		Green 30 M
SFC43-40	0,043"	1,10		
SFC43-60				
SFC43-80				
SFC45-60	0,045"	0,15		
SFC47-60	0,47"	1,20		
SFC51-60	0,051"	1,30		
SFC51-80				

- Compatible with all Airless guns
- Rapid replacement of working nozzle
- Rapid safe cleaning
- Maximum working pressure 350 bar (5075 psi)
- Long lasting carbon-tungsten insert
- Excellent finish

MANUFACTURER:

LARIUS

23801 CALOLZIOCORTE - LECCO - ITALY - Via Antonio Stoppani, 21
Tel. (39) 0341/62.11.52 - Fax (39) 0341/62.12.43
E-mail: larius@larius.com - Internet http://www.larius.com



CUSTOMERS TECHNICAL SERVICE

Tel. (39) 0341/621256
Fax (39) 0341/621234

LARIUS

PAINT SPRAYING EQUIPMENT
www.larius.eu



AT250 AIRLESS GUN

M16x1,5

Code 11200

Professional gun at high pressure

1/4"

Cod. 11250



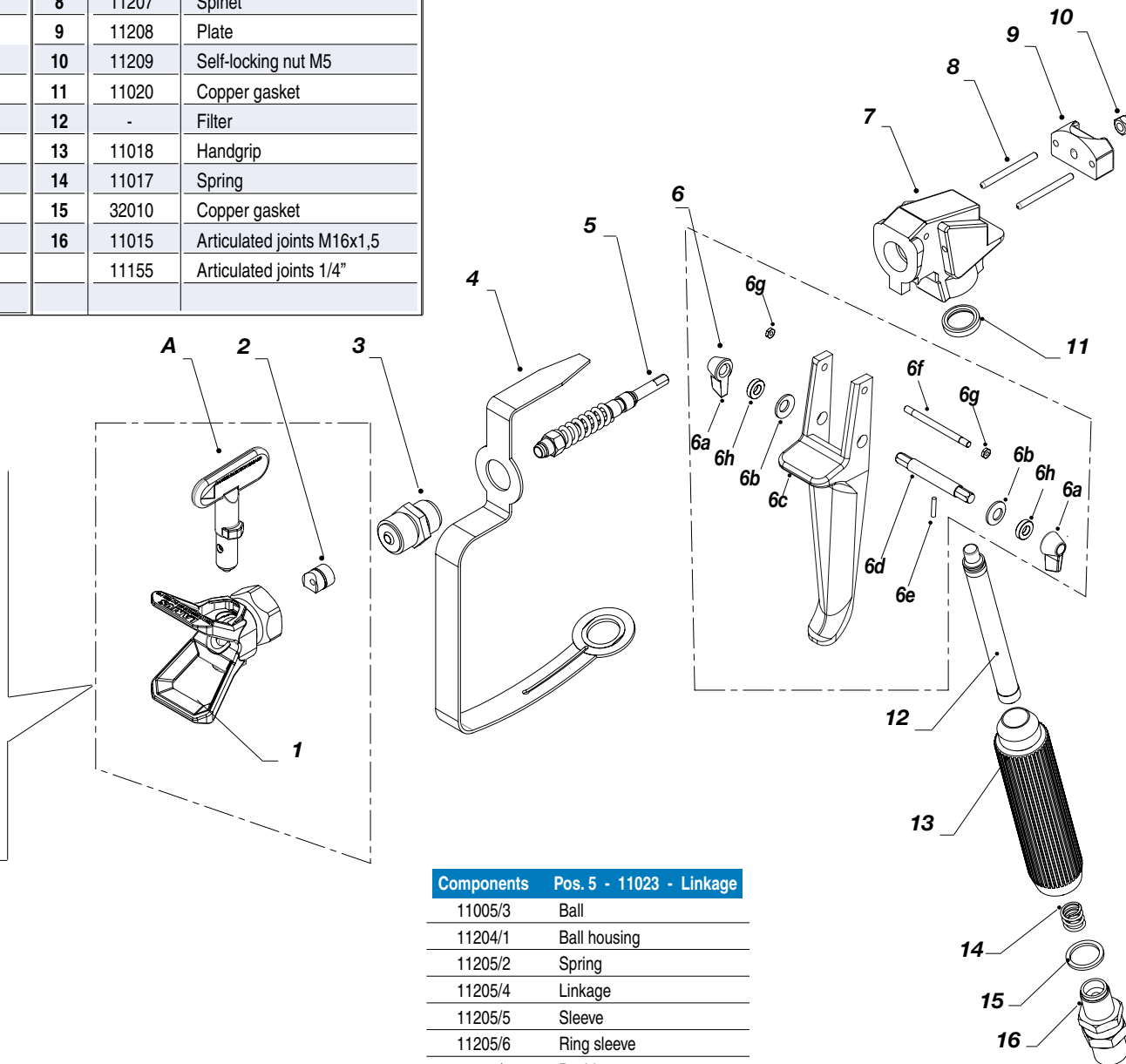
With device-Clean Super Fast

Ed. 004 | 09 - 11

AT250 AIRLESS GUN

at high pressure

Pos.	Code	Description	Pos.	Code	Description
A	See table*	Nozzle Super Fast Clean	6g	11027	Nut M3
1	18270	Body Super Fast Clean	6h	11016	Washer
2	18280	Gasket Super Fast Clean	7	11206	Gun body
3	11004	Sleeve	8	11207	Spinnet
4	11006 +	Safety for hand +	9	11208	Plate
	11032	3 screws TSP 3x8	10	11209	Self-locking nut M5
5	11203	Complete linkage	11	11020	Copper gasket
6	11008	Trigger gun	12	-	Filter
6a	11010	Safety lever	13	11018	Handgrip
6b	11011	Brake washer	14	11017	Spring
6c	11009	Trigger	15	32010	Copper gasket
6d	11012	Pin	16	11015	Articulated joints M16x1,5
6e	11013	Pin		11155	Articulated joints 1/4"
6f	11034/1	Pin			



Components	Pos. 5 - 11023 - Linkage
11005/3	Ball
11204/1	Ball housing
11205/2	Spring
11205/4	Linkage
11205/5	Sleeve
11205/6	Ring sleeve
11205/7	Bushing

- IMPORTANT!**
- NEVER place your hands or fingers in front of the nozzle
 - NEVER point the gun at yourself or anyone else
 - Discharge the pressure in the gun and use the appropriate safety precautions when the operator is not working
 - DO NOT cut or tamper with the safety mechanisms on the device.

Gun Filter: for coarsely pigmented or high viscosity materials, we recommend the use of a nozzle of min. 0.018" diameter and a 50 Mesh filter. For fine, thin-flowing materials, use a filter of 200 Mesh. Filters can be best cleaned with a brush dipped in solvent. Never poke it with a sharp instrument.

Filter cleaning: Unscrew the handle from the gun housing (if necessary, use gun spanner and pull out the filter completely). Insert the new filter as indicated in the drawing.